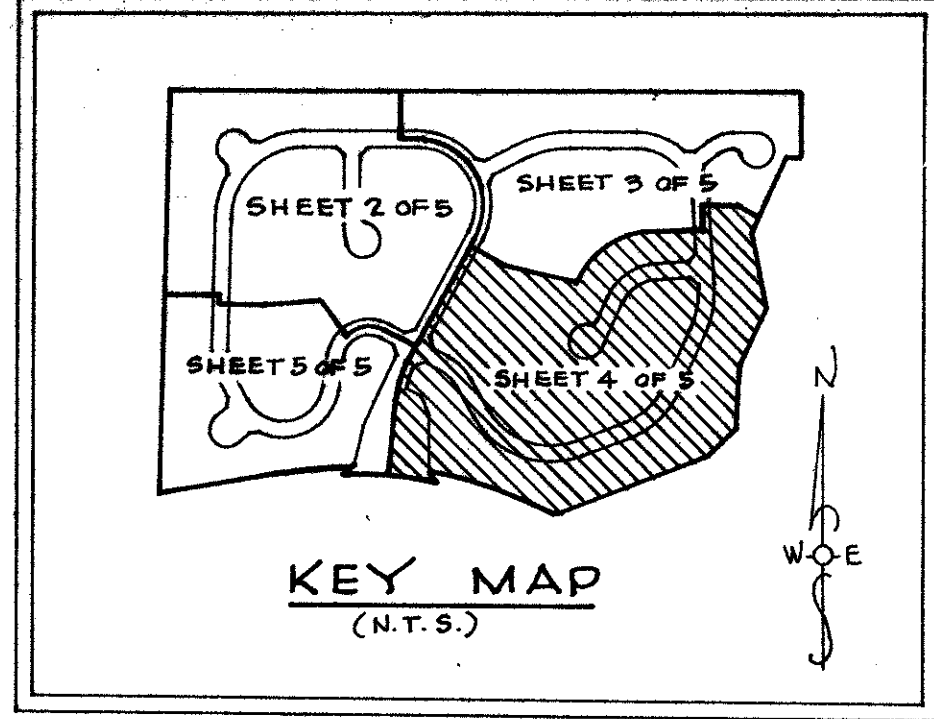


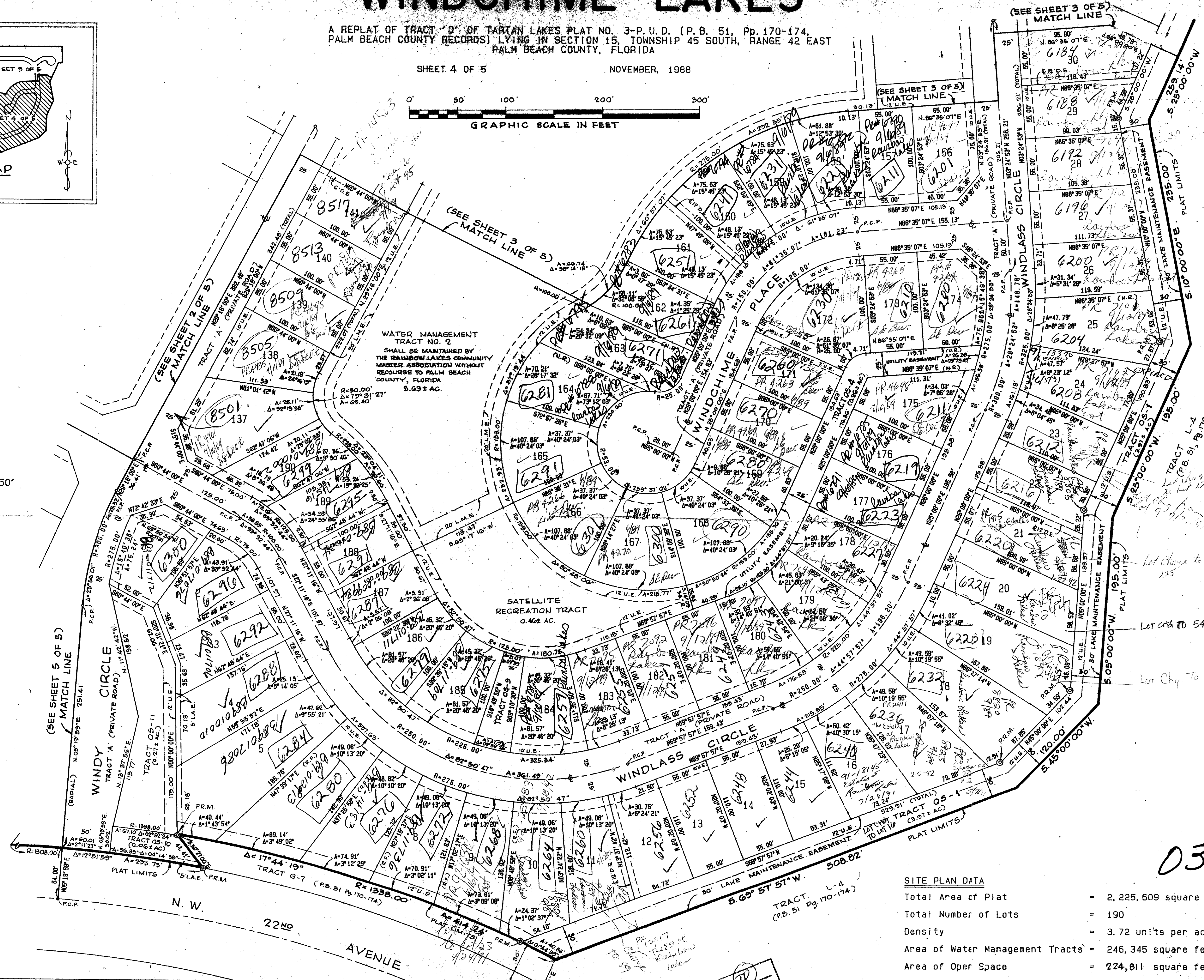
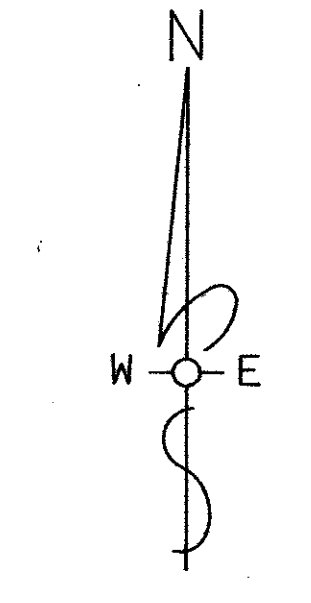
"WINDCHIME LAKES"

A REPLAT OF TRACT 'D' OF TARTAN LAKES PLAT NO. 3-P. U. D. (P. B. 51, Pp. 170-174, PALM BEACH COUNTY RECORDS) LYING IN SECTION 15, TOWNSHIP 45 SOUTH, RANGE 42 EAST PALM BEACH COUNTY, FLORIDA

SHEET 4 OF 5 NOVEMBER, 1988



STATE OF FLORIDA
COUNTY OF PALM BEACH
THIS PLAT WAS FILED FOR RECORD
AT _____ DAY OF _____
A. D. _____ AND DULY
RECORDED IN PLAT BOOK _____
ON PAGES _____ AND _____
JOHN B. DUNKLE
CLERK, CIRCUIT COURT
BY: _____ D. C.



BOOK PAGE
SUBDIVISION
FLOOD ZONE
QUAD
SE
PUD NAME
ZONING
ZIP CODE

Prepared By:
R. P. LEGG AND ASSOCIATES, INC. - LAND SURVEYORS
8120 Pasadena Blvd. Pembroke Pines, Florida
33024

SITE PLAN DATA

Total Area of Plat	= 2,225,609 square feet (51.09 acres)
Total Number of Lots	= 190
Density	= 3.72 units per acre
Area of Water Management Tracts	= 246,345 square feet (5.655 acres)
Area of Oper Space	= 224,811 square feet (5.161 acres)
Area of Rec ation Tracts	= 85,216 square feet (1.956 acres)

0316-006

"WINDCHIME LAKES" 62/111